

Westlake ES | Bond Committee Meeting

SANTA CRUZ CITY SCHOOLS | 16 DECEMBER 2020



BARTOS
ARCHITECTURE

COLLABORATION
ADVOCACY
RESEARCH
EDUCATION

Bond Committee Update: Westlake Elementary School

Agenda

01

Introductions

02

Review Completed Projects

03

Ongoing and Upcoming Projects

05

Priorities and implementation

Schedule Next meeting

Bond Committee Update: Westlake Elementary School

Past

- ✓ Marquee Sign, Complete
- ✓ Campus Re-roofing, Complete
- ✓ Both Accessible Lifts, Complete (Upper and Lower)
- ✓ Toilet Partitions: Complete (Upper, Multi-Purpose Room and Lower)
- ✓ Site sewer Repairs Phase 1

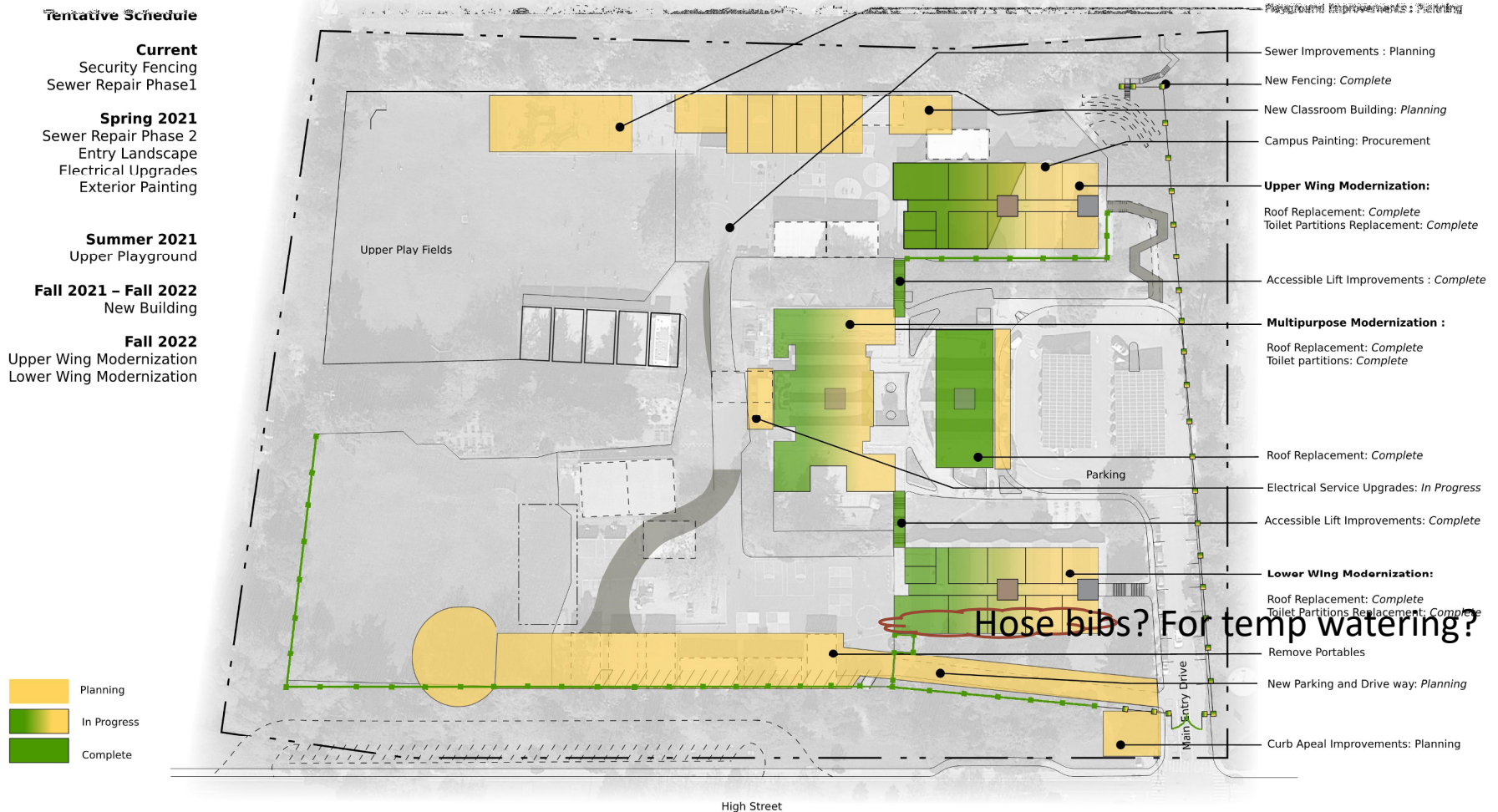
Ongoing

- Site Security Access Card system
- Classroom Technology (Data)
- Site Security, Fencing, Under Construction
- Electrical Power Upgrades: Bidding NOW, Construction: Spring - Fall

Future

- Front Entry Landscaping. Bidding Spring as small project
- Site Sewer repairs phase 2: Bidding spring, summer construction
- Exterior Painting: Bidding spring, summer construction
- Playground Play Equipment, Being Selected: Covid Complications
- Relocation / site preparation for New Building
- New Modular Classroom Building

Bond Committee Update: Westlake Elementary School



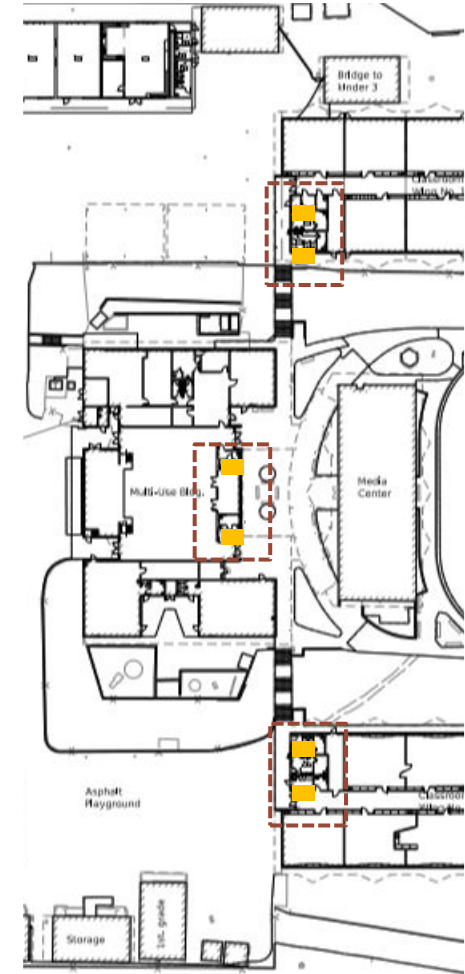
Master Plan Diagram

collaboration | advocacy | research | education | sustainability

16 DECEMBER 2020

BARTOS
ARCHITECTURE

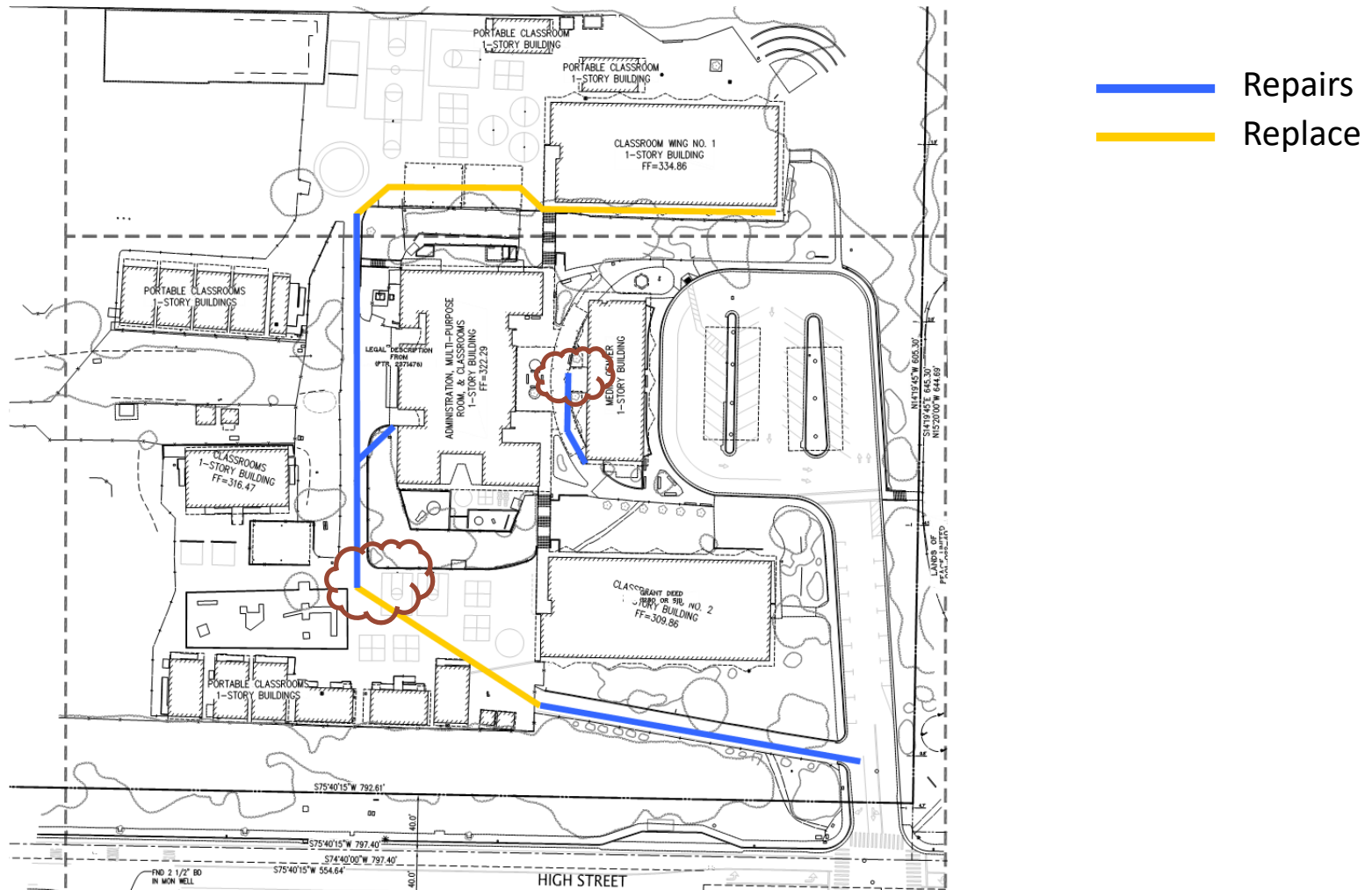
Bond Committee Update: Westlake Elementary School



Toilet Partitions

Upper Campus
Multi-Purpose Room
Upper Campus

Bond Committee Update: Westlake Elementary School



Sanitary Sewer Diagram

collaboration | advocacy | research | education | sustainability

16 DECEMBER 2020

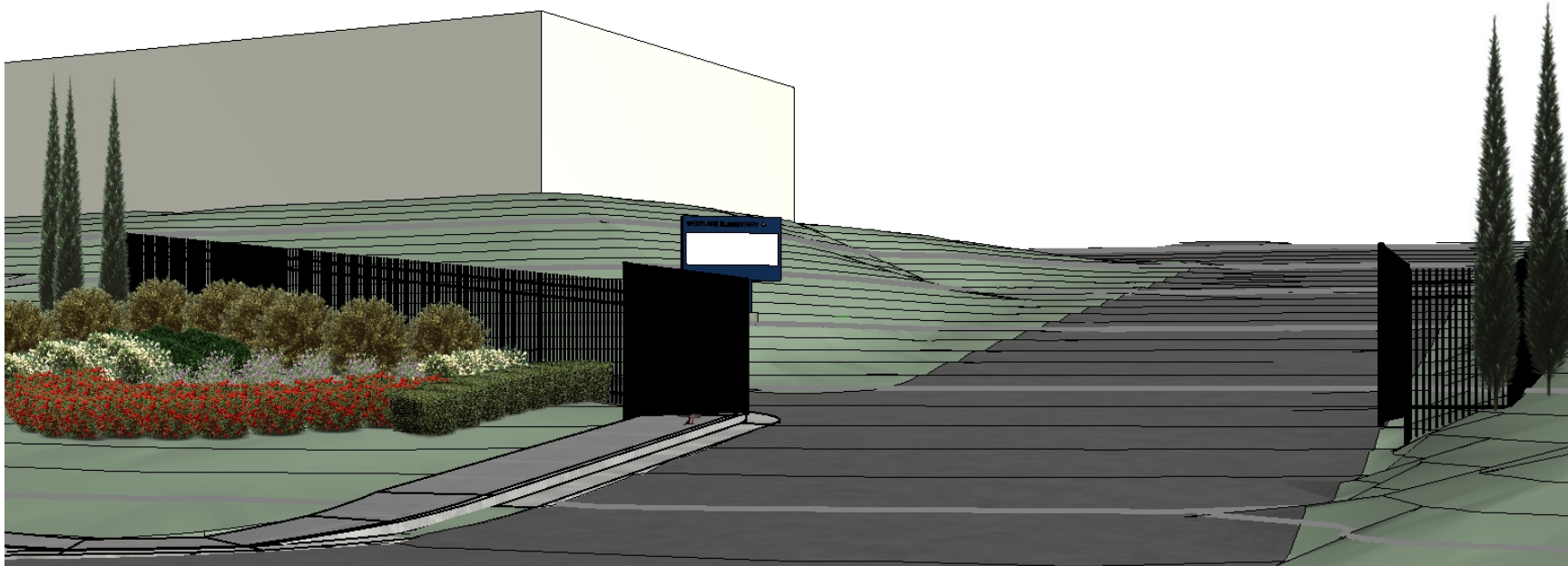
BARTOS
ARCHITECTURE

Bond Committee Update: Westlake Elementary School



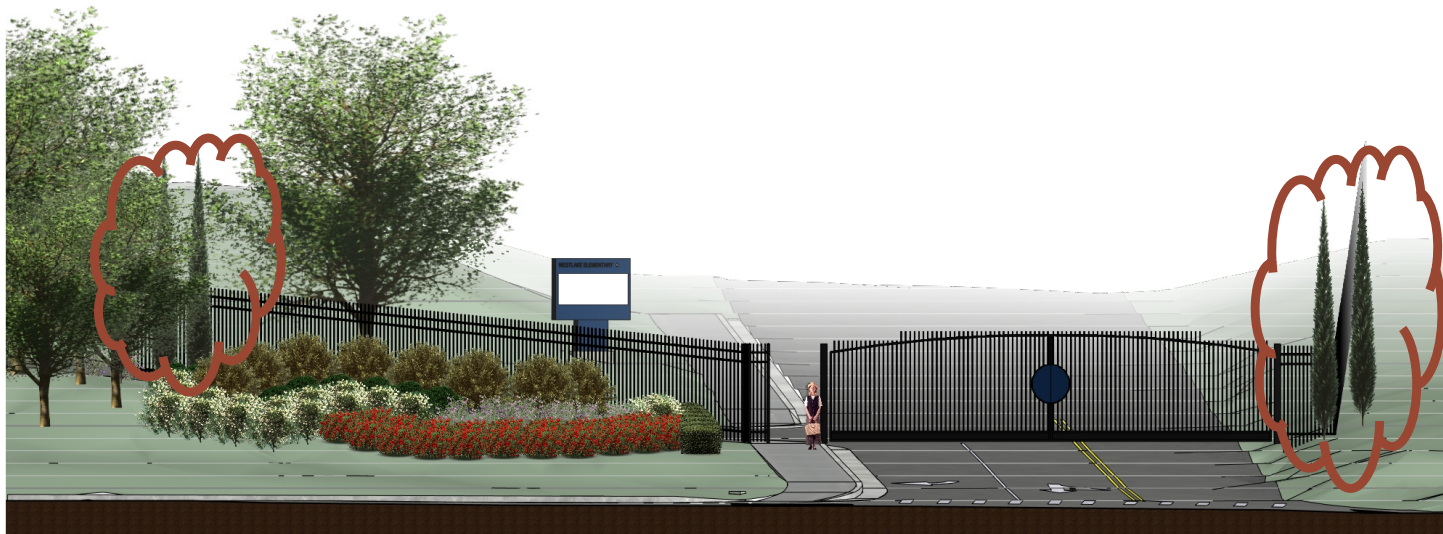
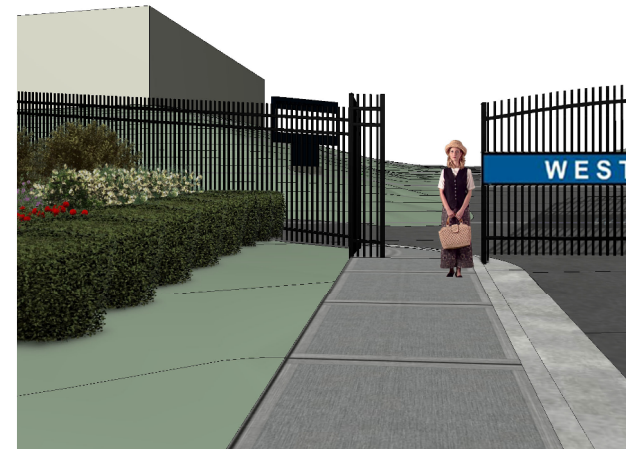
Front Entry Gate

Bond Committee Update: Westlake Elementary School



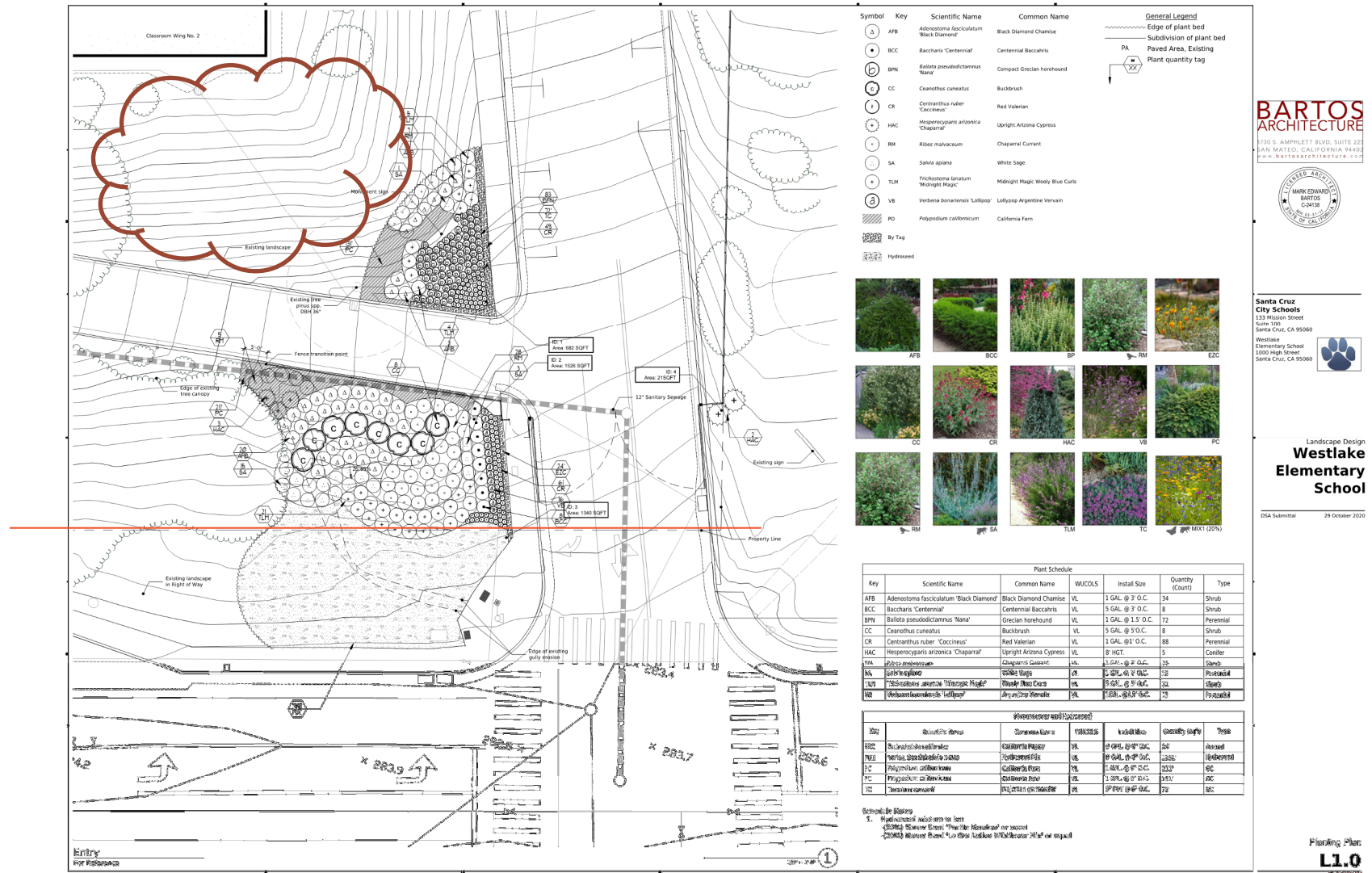
Front Entry Gate

Bond Committee Update: Westlake Elementary School



Front Entry Gate

Bond Committee Update: Westlake Elementary School



Front Entry Landscaping: Construction Drawings

16 DECEMBER 2020

collaboration | advocacy | research | education | sustainability

BARTOS
ARCHITECTURE

Bond Committee Update: Westlake Elementary School



Black Diamond Chamise



Centennial Baccharis



Grecian Horehound



Chaparral Currant



California Poppy



Backbrush



Red Valerian



Arizona Cypress



Argentine Vervain



California Fern



Chaparral Currant



White Sage



Wooly Blue Curls



Majorcan Germander



Hydroseed Mix

Landscape Planting

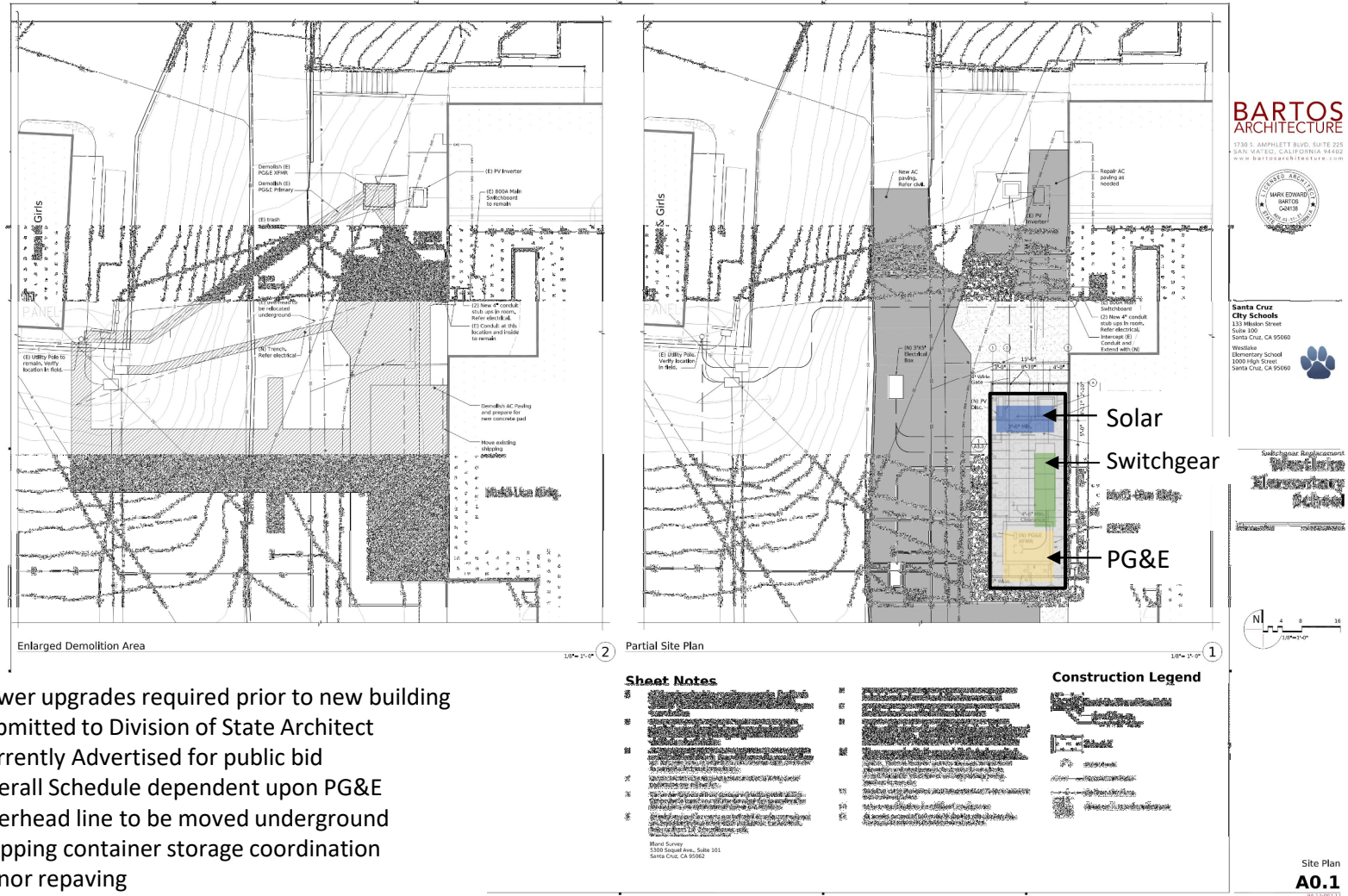
Ground Cover

collaboration | advocacy | research | education | sustainability

16 DECEMBER 2020

BARTOS
ARCHITECTURE

Bond Committee Update: Westlake Elementary School



- Power upgrades required prior to new building
- Submitted to Division of State Architect
- Currently Advertised for public bid
- Overall Schedule dependent upon PG&E
- Overhead line to be moved underground
- Shipping container storage coordination
- Minor repaving
- Construction during late spring through summer

Switchgear (Power) Construction Docs

Bond Committee Update: Westlake Elementary School

Project	Allocation	Status
Multi Project Overhead	\$500,000	Ongoing
New Classroom Building	\$4,750,000	Fall 2022
Remove Upper Portables	\$41,427	Summer 2022 (with (N) building)
Site Improvements	\$1,001,981	Fence, Access, Sign, Playgrounds
Mod Phase 1 Upper	\$1,000,000	Mod + painting **
Mod Phase 2 Lower	\$1,000,000	Mod + painting **
Mod Phase 3 (Admin)	\$11,740	Actual expenditures
Lower Parking	\$1,000,000	Funding Dependent: Last
Re-Roof	\$2,279,788	Complete
Utility Infrastructure	\$1,000,000	Site Power Upgrades, Sewer
Card Access Security System	\$212,363	Ongoing
Data Infrastructure	\$335,000	Ongoing
<i>Budget allocation-ROM only.</i>	\$13,132,299	
<i>Measure B Resource</i>	\$13,439,288	

Note: these estimates are general (Rough order of magnitude) and depend on economic circumstances, and scope as it is identified for each project. This is an outline indicating project priorities

Bond Committee Update: Westlake Elementary School

Agenda

01

Introduction

Welcome new members

02

Review Completed Projects

03

Ongoing and Upcoming Projects

04

Priorities and implementation

Schedule Next meeting

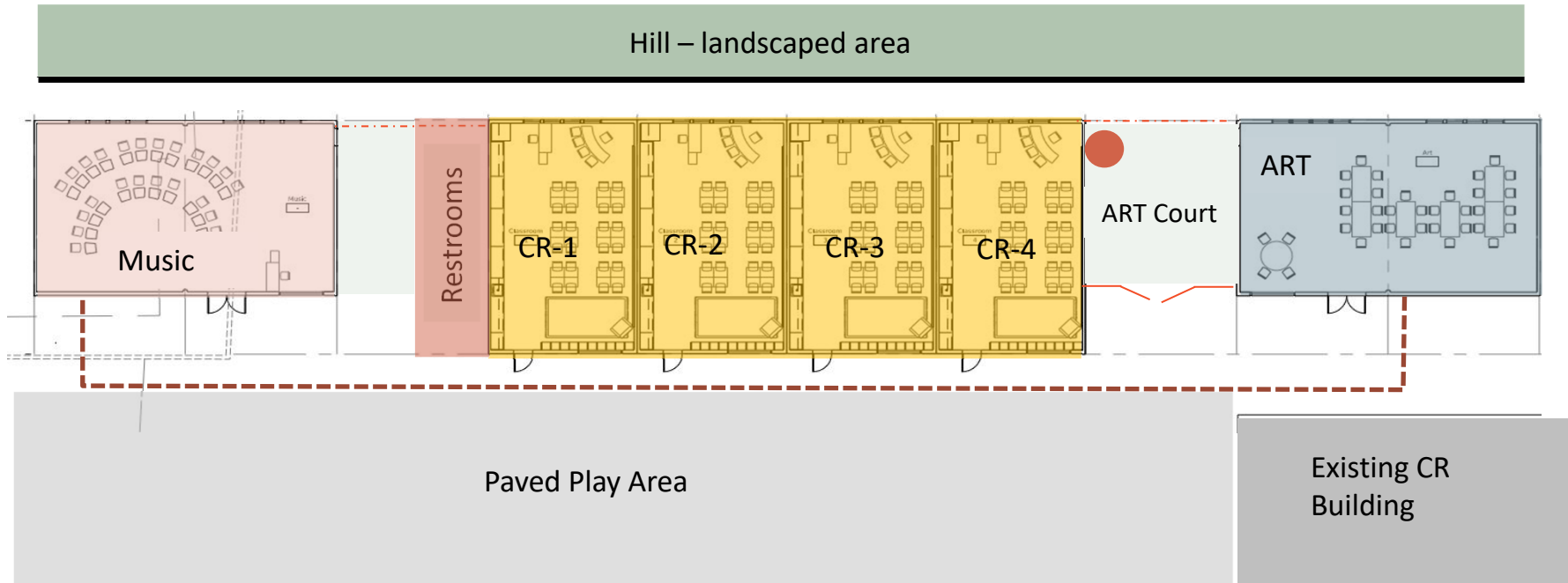
Bond Committee Update

End

Bond Committee Update: Westlake Elementary School

Option B

New 3rd Grade Modular Wing with Art and Music

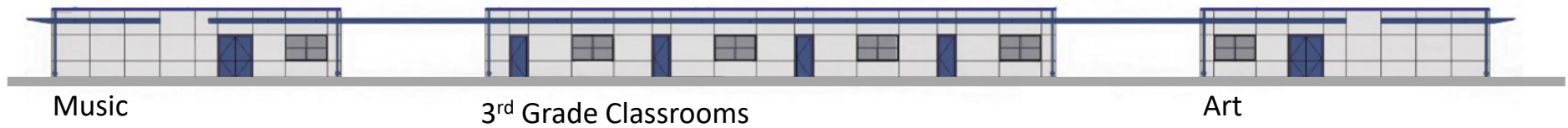


For REFERENCE

Initial concept for initial pricing with Modular Manufacturer.

Bond Committee Update: Westlake Elementary School

New 3rd Grade Modular Wing with Art and Music



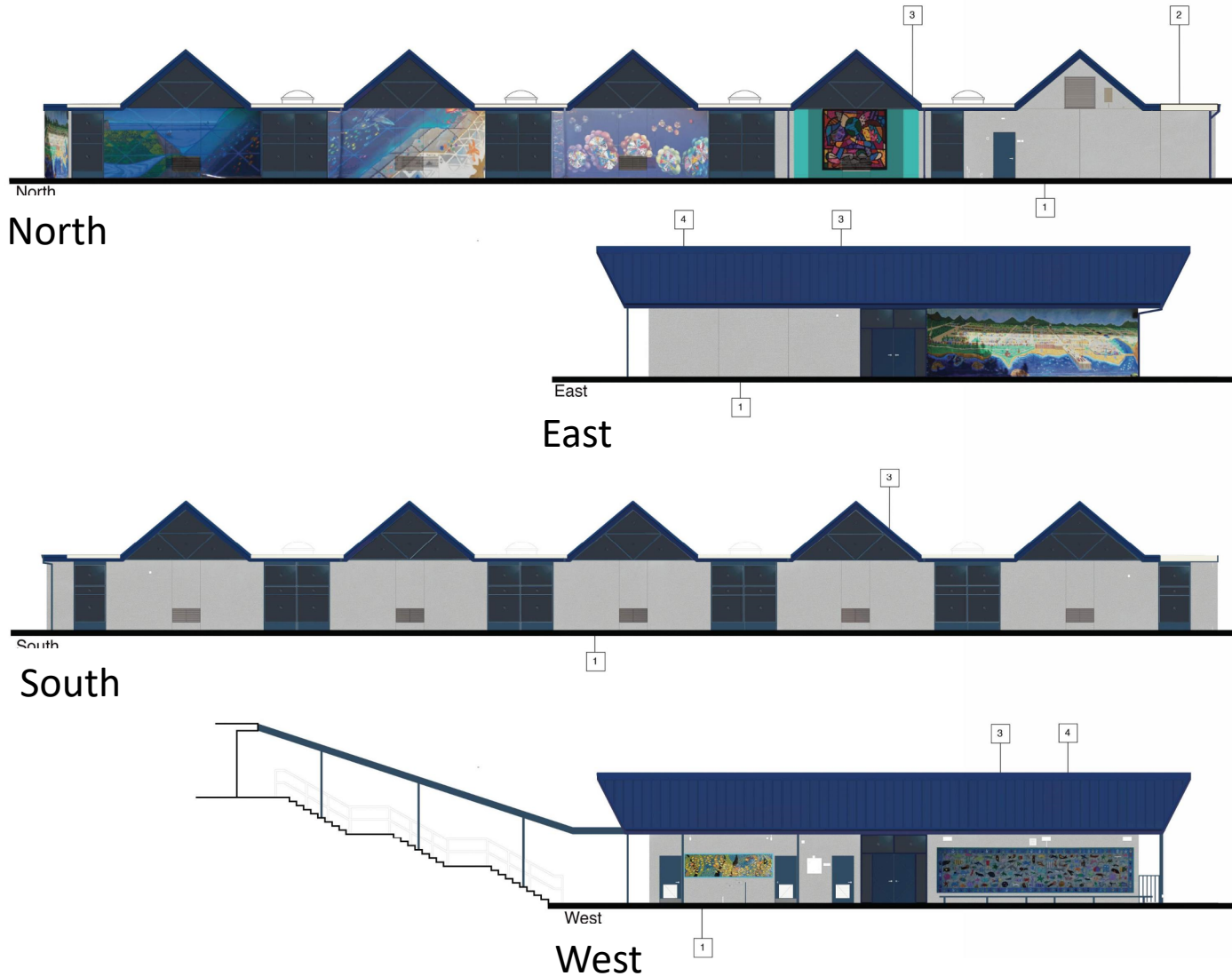
Option 2

For REFERENCE

For initial pricing with Modular Manufacturer

collaboration | advocacy | research | education | sustainability

Bond Committee Update: Westlake Elementary School



Campus Painting: Upcoming

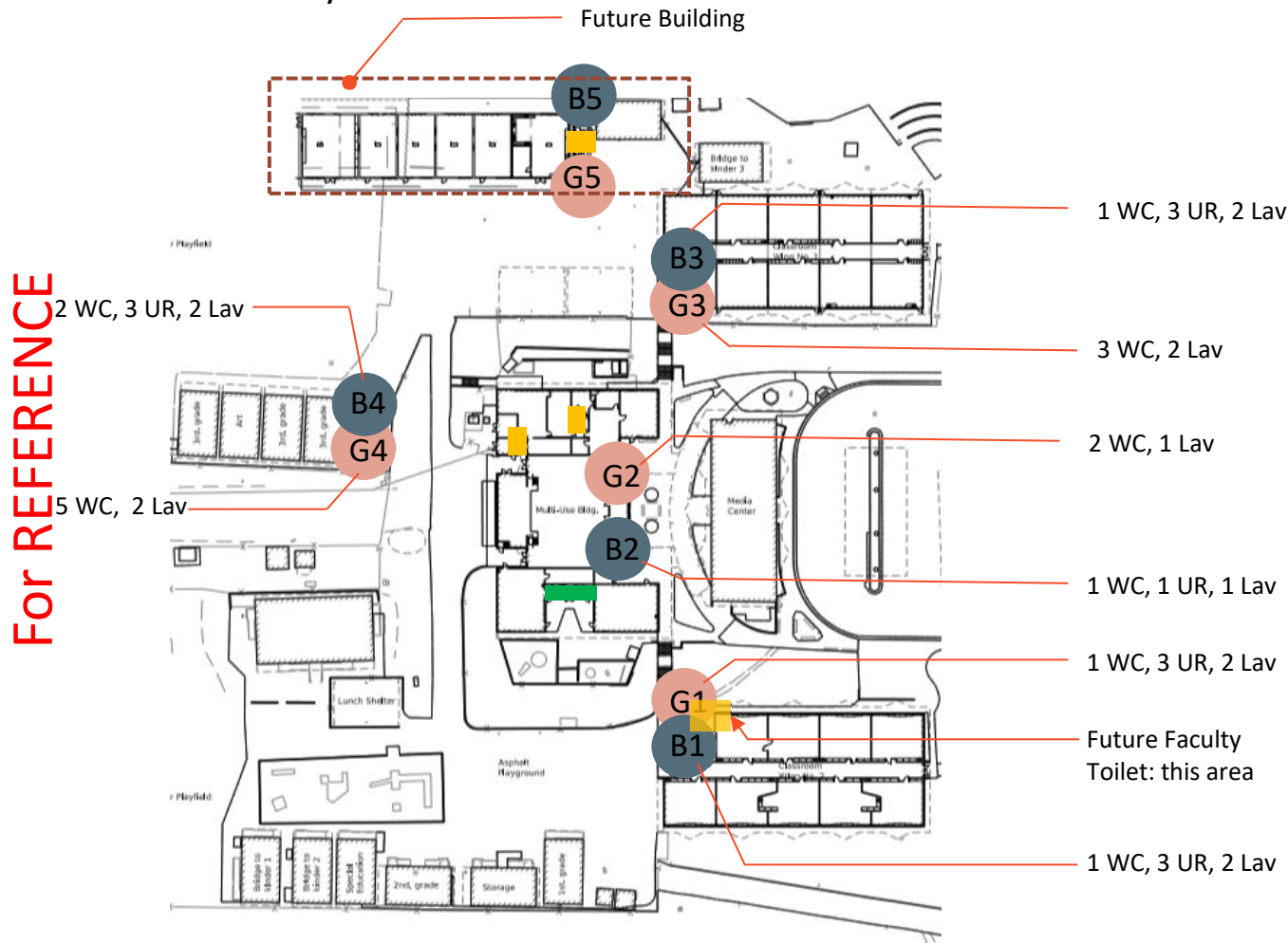
collaboration | advocacy | research | education | sustainability

16 DECEMBER 2020

BARTOS
ARCHITECTURE

Bond Committee Update: Westlake Elementary School

Restroom Analysis



Girls	WC	UR	LAV
G1	3		1
G2	2		1
G3	3		2
G4	5		2
	13		6

Analysis	500	Students
Code	17	NA
Need	4	7

Boys	WC	UR	LAV
B1	1	3	2
B2	1	1	1
B3	1	3	2
B4	2	3	2
	5	10	7

CBC Required	500	Students
Code	13	5
Need	8	13

Proposed
 B5: + 1 WC + 1 L
 G5: + 4 WC + 2 L
 GN: + 1 WC + 1 L



For REFERENCE

Campus Restrooms: For reference only